



# NEIGHBOURHOOD WATCH

## WORKING IN YOUR COMMUNITY



For over 40 years, Neighbourhood Watch has been encouraging safer and stronger communities. For many of us, this is reflected in our own instincts to be good neighbours and look out for each other.

As individuals or families we value living in a safe and secure home and this is greatly helped by living in safe and secure environments and communities. To this aim, Neighbourhood Watch links with the Police and other authorities, helping bring a strong emphasis on crime awareness and crime prevention, as well as encouraging reporting to the Police our suspicions or concerns.

You may have received our leaflet already.



It has three simple messages:

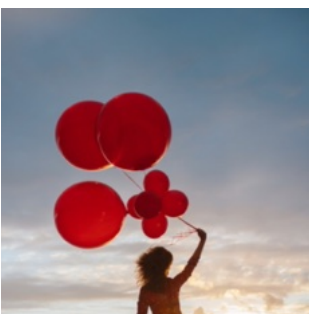
1. Join Neighbourhood Watch at [ourwatch.org.uk](http://ourwatch.org.uk)  
By doing this you will receive the all-important local Police Alert messages.



2. Once signed-up please also join your local Neighbourhood Watch scheme using the postcode search.

3. If that scheme is not near you, please apply to start your own scheme. Once approved, the

Milton Keynes Neighbourhood Watch Association can supply materials including street signs.



## SUMMER CRIME PREVENTION

Summer is here and some simple tips to keep you, your family and property safer:



- Remember to close windows, and lock cars and caravans when leaving. Keyless fobs - think about keeping them in a 'faraday' pouch.
- Ensure pets are protected from heat, and have ample water and food, and not kept unattended in vehicles.
- Don't leave valuables in cars. If you have to, then place them out of sight.
- At home, keep sheds and garages locked. Store garden equipment away at night.
- Bikes - use a lock when leaving unattended, even if for only a few minutes.
- Be conscious of other people and your surroundings. If you spot anti-social behaviour - report it.
- Whilst out and about be aware of your mobile, camera, keys, sunglasses, purse, wallet - all targets for thieves.
- Use smart bulbs at home or lights on timers. Fit sensors to lights in the garden to illuminate when movement is sensed.
- Don't discuss holiday plans in public or on social media.
- Don't put your home address on your holiday baggage label.
- If you are planning a holiday, ask neighbours to watch over your home and to ensure that post is pushed completely through the letterbox.
- **Better still, set up a local Neighbourhood Watch scheme to build safer homes and communities.**

To join Neighbourhood Watch, sign-up at the website

[ourwatch.org.uk](http://ourwatch.org.uk) and become a member. It's free. Whilst there, join a local Neighbourhood Watch scheme or start a scheme yourself. It's easy and an excellent way to bring your neighbours together to build a safer community.

